



GIGHA NEWS

Welcome to the April 2019 Gigha News



Dear Member,

Please find enclosed this month's newsletter.

Copies of minutes from April's members meeting and Board meeting will be issued shortly.

Regards,

Ian Wilson
Chair
For and behalf of Isle of Gigha Heritage Trust

Acknowledgements

Gigha Open Day – 15th March:

- Thank you to Gigha Hotel for hosting the Open Day and for also kindly providing afternoon tea and a curry tasting session. This was greatly appreciated by all those who attended.

- Also thank you to Joe Teal for bagpiping and John Martin for saying a few words for the raising of the Gigha flag.

- Finally, thank you to all those who were able to attend the Open Day. We believe this was a good opportunity to engage with the community and recognise how the island has progressed since 2002.

Thank you to Stuart McNeill and John Mcvean for repairing the Trusts tractor and for also help repair the Gallohoille road - Your continued support is much appreciated.

Phil Salvadori kindly assisted Andy and Jane Clements in the removal of a dangerous tree near Achamore House. We appreciate anyone who is able to assist in keeping the woodland area safe.

Congratulations to Joe Teale and Hannah Storie on the safe arrival of their baby girl!

Activity Centre

We are pleased to have confirmed that Douglas Elder will be running the Activity Centre this season on behalf of the Trust. The Activity Centre is a great asset to the island so we appreciate the doors being open for the season! To hire bikes, please contact Dougie directly on 07516709249 or the Gigha Activity Centre Facebook page.

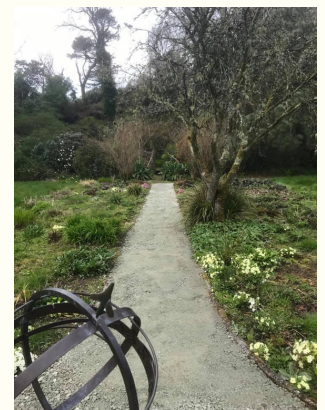
Achamore Gardens

The Trust have recruited 5 seasonal positions within Achamore Gardens. Work in the gardens will start promptly and there will be a focus on general maintenance and tidying of the gardens and also the propagation of the Horlicks Collection.

Ann Steel from Natural Trust for Scotland has been in contact, providing advice to the Trust with regards to Achamore Gardens. The Trust are in the process of creating a development plan for the Gardens with a large focus on the propagation of the Horlick Collection. Ann Steel has also offered to come visit Achamore Gardens at the end of May so she can assist the Trust on what the National Trust for Scotland expects to see from Achamore Gardens.

Achamore Gardens Volunteer Weekend - 6th & 7th April

Thank you to all those who were able to assist in tidying up the walled gardens. We appreciate the time and effort put in and are please to see the Gardens progressing. Before and after photos below!



Gateway to Gigha Access Project

The application to the Natural Cultural Heritage Fund has now been submitted. This is a highly competitive fund however we are hopeful we have a good well-developed project which has received good support from members, local Councillors, MP and MSP, as well as Argyll and Bute Council and Historic Environment Scotland.

We would like to thank those who were able to complete the survey that was available online, at the Open Day and in the Trust office. We would also like to thank those people on the island who gave time to help us develop the project. We have also received great help from Jolyon Gritten, Argyll and Bute's Access Officer, as well as from Historic Environment Scotland. All the help and input has been much appreciated. As noted in the survey responses, issues with accessibility and knowledge of the location of the sites discourages people from visiting.

We have proposed the development 16 pathways across the island - some of which are already existing and needing upgraded, and also some new routes. We have also looked at the safety of pedestrians and cyclists in our plan. We also want to encourage more people to come to Gigha without their car – having better paths and more information will help this.

The routes proposed are as follows:

1. Pier to hotel upgrade
2. Boathouse to Rubh' A Chinn Mhor bay
3. Bodach & Cailleach - Clearer access and interpretation/protection
4. North End Cairn
5. Peir to Croft 5 by Drumyeonmore Bay route
6. Cuddyport to Quern Stones
7. Fire Station to Hall to Lovers Lane
8. Ogham Stone - Clearer access and interpretation/protection
9. Fishermans Cave - upgrade path
10. Gallochille (to Dun and sandy beach)
11. Eilean Garbh - upgrade path
12. Palm Beach - The real twin beaches
13. Spouting Cave Sloc an Leim
14. North End Beach - improve parking area
15. Holy Stone - Clearer access and interpretation/protection
16. A clearer safer route across the west side

Costs have been based on advice from a local landscape contractor with many years of experience in this type of work. Salary costs are based on equivalent roles.

The project aims to ensure that younger islanders in particular are given an opportunity to learn about path building and develop new skills. This will also enable them to get involved in the implementation of the project and also the maintenance of the pathways afterwards.

The project also includes an island Ranger who will develop an events and activity programme on the island, aimed at visitors but also the local community. Again, this would ideally be one of our young people who could start as an apprentice and develop their skills and knowledge during the project.

The project will further help us update the website and make downloadable maps available of the routes and also provide some information on the difficulty level of the route and how long walking time it may take.

We have also included a small project to conserve and protect the Ogham Stone, and possibly other carved stones on the island, under the auspices of Historic Environment Scotland. This would be an opportunity for the community to learn new skills and get involved in protecting our heritage.

Finally, thank you to those who have provided letters of support for the project. These have been included in the application and have been greatly appreciated.

It has been a lot of time and effort on part of many people to put this together. We now need to wait until September to hear if we have been successful.

Any further questions or queries, please contact jane@gigha.org.uk

GREL/GGPL Update

We are pleased to welcome Ian Pinniger on to the board of GREL and GGPL.

GTL Update

GTL have recently purchased a shed that is located behind the Trust office. This is to store log nets that are provided to those staying at the self-catering cottages. Complimentary logs are provided to guests and further logs are available to purchase from GTL.

The pontoon will shortly be reinstated for the season. GTL are preparing and looking forward to another busy season on Gigha!

Events

Gigha Primary School Volunteer Day

The weather could not have been more favourable for the school's volunteer day on Saturday 13th April. With the help of grant funding from Awards for All, the School were finally able to design and build a play area for the under 5's at the school. The school were overwhelmed by all the help they received from friends and family and staff that helped create a wonderful fun, garden area that the children can explore, and also having created a safe space to play and encourage imaginative play.

Gigha Primary School would like to thank all those who helped. The volunteers were digging, barrowing gravel and concrete, and painting all the outdoor sheds and planters! The volunteers donated their precious time, and it is very much appreciated. There was real team spirit on the day and now very happy nursery children.

For anyone wanting to come and see the play area - you are more than welcome to as long as you inform the school ahead of your visit.



Sing for Fun!

Eleanor Logan is holding a singing group every Wednesday in the Gigha Gallery from 7 till 8.30pm. No experience necessary, all ages welcome and entry is by donation. There will be a wide range of different songs so something for everyone!

Gigha Music Festival

Tickets for Gigha Music Festival to held on 29th June 2019 are now on sale online, and booking is also available via emailing booking@gighamf.org.uk where payments can be accepted by bank transfer, Paypal or in person.

Recent Visits

Cleland Sneddon, CEO of Argyll and Bute Council recently visited the island. Cleland's position requires him to keep up to date of activity across Argyll therefore he took this opportunity to catch up on the islands activities. He visited the Wee Isle Dairy where he was very pleased to have tasted their produce, before coming to the Trust office to meet the staff and some of the directors to discuss the progress on Gigha. Cleland then met up with the Gigha Community Council for a further catch up on island activities.

Michael Russell MSP also visited the island recently to hold surgery and meet with some of the directors to discuss any concerns in the community.

We hope to welcome both back to Gigha soon!

(Photos provided by Morven Beagan and Mari Wilson)



Islands Plan Consultation

On Tuesday 21st May there will be an Islands Plan Consultation event, hosted by the Scottish Government. This will be held in the Gigha Village Hall from 6.30pm to 10pm.

The consultation programme includes island events as well as an online consultation and it will gather feedback for both the National Islands Plan and Island Communities Impact Assessments. Its also a great chance for communities to meet the Scottish Government Islands Team to highlight ideas, projects, concerns etc. This is a little bit from the Scottish Government to explain things further:

Scottish Government is running these sessions because they want to understand what works really well on your island, but also the challenges the island community is facing.

They'd like to hear from you because this is an historic moment in Scottish Policy, one in which island communities have the opportunity to shape their own future by feeding into the National Islands Plan.

Your information will be used to shape the National Islands Plan so that it responds truly to the wishes, desires and concerns of island communities. Scottish Government and the team supporting the consultation will organise a session that will allow them to develop a sense of the vision and challenges stemming from your island and will get back in touch after the face to face event to be sure that they captured properly the views of those who participated.

They are held in a world-cafe type format where, after an introduction, attendees will be split into tables of 4 and 5 to discuss, agree and rank their responses to a number of set questions. The top issues from each table are shared with the whole room, discussed and during the process the major agreed issues, possible solutions and requests come to the fore. The process takes about 2 hours.

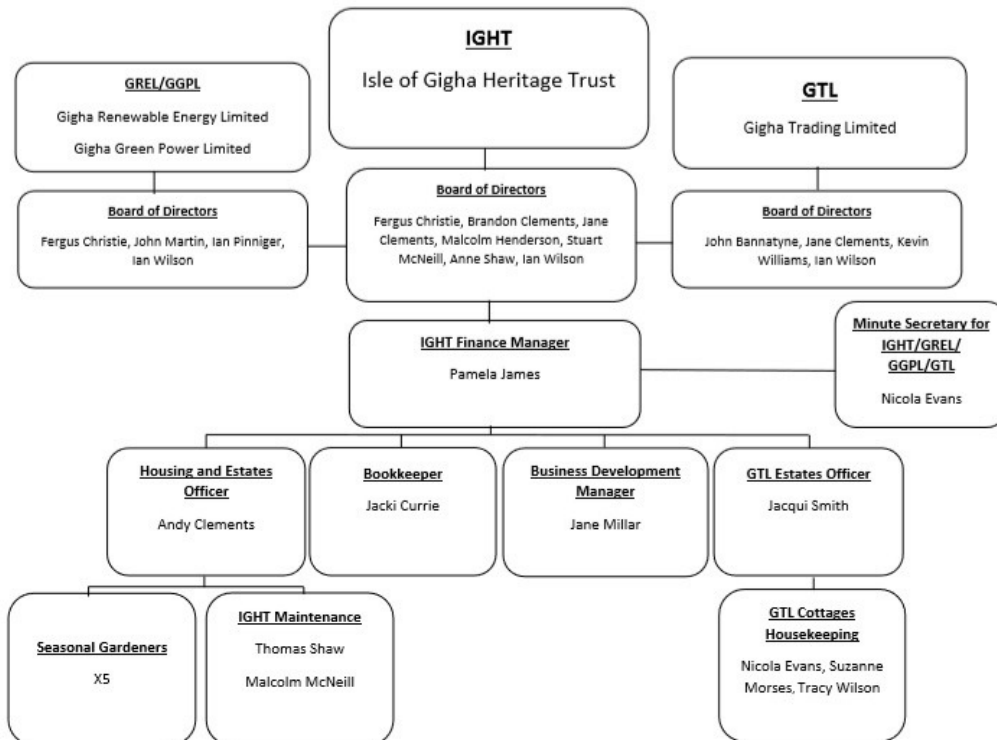
Main Contacts:

General Enquiries: 01583 505390

IGHT Estates: office@gigha.org.uk

GTL Estates: cottages@gigha.org.uk

Staff Structure Update



The Isle of Gigha Heritage Trust Ltd is a company registered in Scotland (registered number: 334141) and a Registered Scottish Charity (charity number: SCO 32302).